

# VICTORIA GOLD CORP - DORSEY CREEK PROJECT



*West End Jasperoid: Drill roads and exposed jasperoid along a quartz porphyry dike.*

## **LOCATION:**

67 miles north of Elko, Independence Range, Elko County, Nevada.

## **HOLDINGS:**

46 owned unpatented claims.

## **Target:**

Carlin type gold.

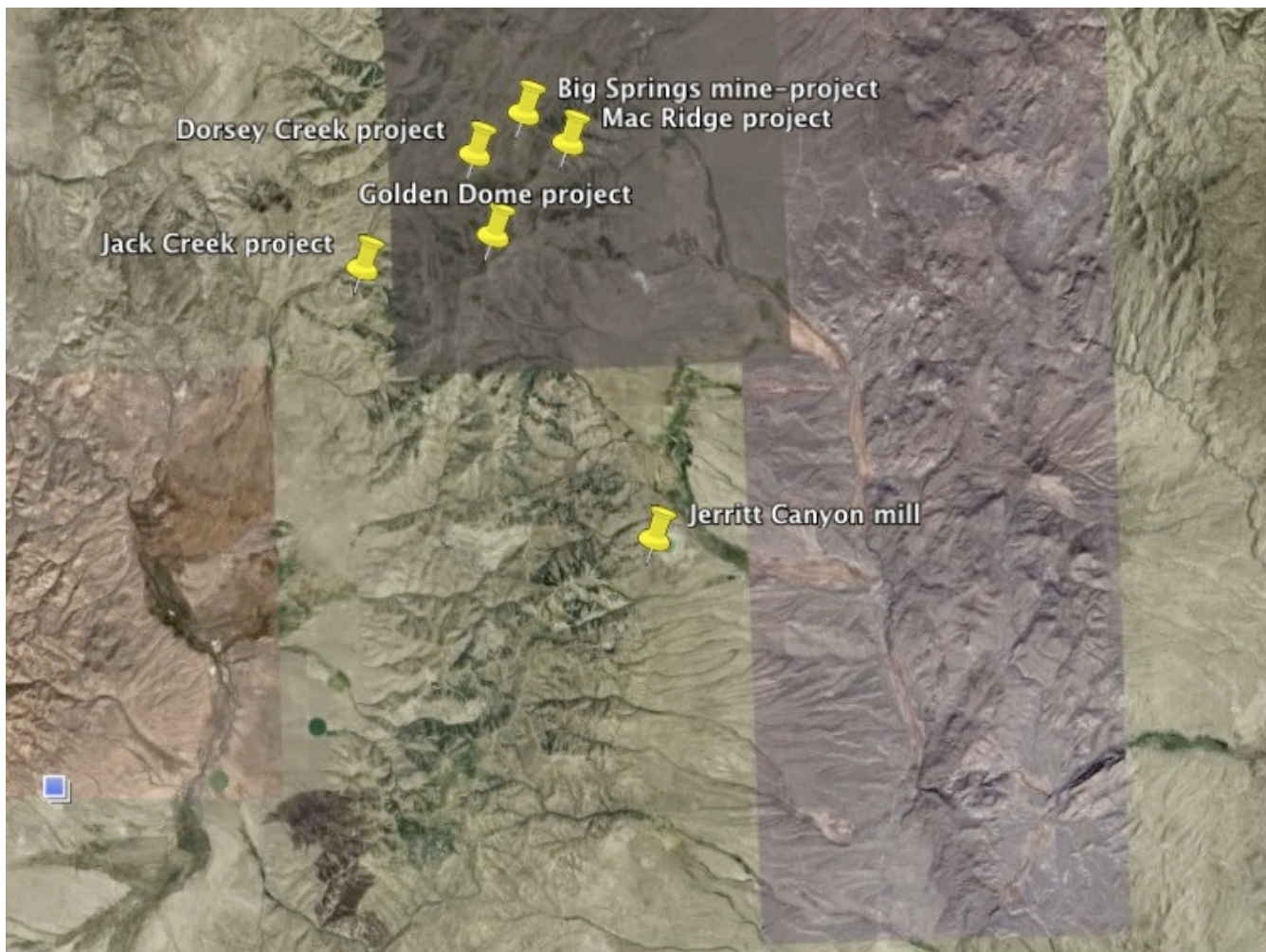
## **LAND STATUS:**

Forest Service

## **HOLDING COSTS:**

\$7,185.50/year (county and BLM).

- Drill defined 20,713 oz Inferred NI 43-101 compliant gold resource.
- District scale project when combined with Big Springs, Mac Ridge and Golden Dome.
- Located within the Independence gold belt.
- 25 miles from the Jerritt Canyon milling facilities.
- Several rock chip and soil gold anomalies.
- Several >0.2 opt Au drill intercepts requiring follow-up drilling.
- Mineralization exposed at the surface.



## **GEOLOGY**

The property is underlain by Pennsylvanian-Permian Overlap Assemblage siltstone and conglomerate and Schoonover Sequence clastics, greenstone and a major gabbroic sill. These rocks have been subjected to intense folding, forming tight, overturned folds in many places. In turn, the rocks have been cut by a major quartz porphyry dike, the Dorsey Dike, along the NE trending Schoonover thrust fault. The rocks are also cut by several NE and EW trending faults, along which anomalous gold occurs. Mineralization occurs in silicified Overlap rock directly SE of the Dorsey Dike, in the dike and in silicified rocks along the EW trending Headwall fault.

## **TARGET AREAS**

**DORSEY DIKE AND WEST END JASPEROID:** Drilling to date has defined a small inferred gold resource contained within and directly above the Dorsey Dike. This mineralization occurs as silicified rock and is open to expansion both laterally and at depth. There are also several gold geochemical anomalies in the area that have yet to be tested.

**HEADWALL FAULT:** anomalous gold and stibnite occurrences in variably silicified rocks are localized along the EW trending fault trace. These anomalies deserve more detailed mapping and maybe drilling.